



Your voyage to freedom

AWAITS

Contents

04

About TES

05

History

06

Dealers

08

Tes Master

10

Tes 678 Bt - Tes 720

12

Tes Versus

14

Tes Magnam

16

Tes Dreamer

18

Quality & Comfort

20

Colors

22

Interior Design

24

Kitchen Variations

25

Kitchen additions

26

Fridge variations

27

Electric dashboard
panels

28

Audio

29

Contact



◆ About TES

“The secret to happiness is freedom... And the secret to freedom is courage.” - Thucydides

We believe that the courage to follow your dreams is the key to happiness. The dream in our case is woven of wind and water.

Based on timeless constructions and 40 years of experience and thanks to knowledge and critical thinking, we have created a boutique shipyard that brings to life these models full of beauty and grace. The shipyard itself has been producing yachts in Drzewica continuously for several decades. The company's headquarters is located in Gdynia – the sailing capital of Poland, a city that loves sailors and for many is a synonym for freedom.

For the convenience and comfort of sailors, our models are equipped with high-quality equipment. Its reliability ensures that sailors spend their time doing what they love the most.



Piotr Grzegorski
Owner



Marcin Ślusarz
Owner



Wojciech Plewiński
Owner

◆ History



◆ Dealers



TES Yachten

Deutschland, Österreich & Schweiz

Schatzlgasse 28 82335 Berg

+49 (0) 17630623350

sailing@tes-yachten.de



SUNGWOO SHIPPING CO.,LTD. (Old Name : Marine21)

#721, 312, Suyeong-ro, Nam-gu,

Busan, Korea

+82-51-465-9647

oldsalt@naver.com



Tes Yacht Italy Northeast Vialtaia

Cesare Battisti 138

Lonigo (VI) 36045

+39 3494594402 +39 0444 835664

northeast@alice.it



Tes Yacht Turkey Gozdem

Marin Mimar Sinan Mahallesi, Üsküdar
Caddesi

YEDPA Ticaret Merkezi H2 Caddesi P2
No:99 Ataşehir İSTANBUL, TÜRKİYE 34779

0216-4559824 0538-771109

pelindemirayak@gozdem-marin.com



Tes Yacht Canada

30 Sai Crescent

Ottawa, Canada

+6 135 237 857 +6 137 994 982

info@tes-yacht.ca



U.S.Yachts & Customs, Inc.

092-513-2530

sail@usyachts.co.jp



Tes 550 Master Parameters

Length	5,50 m
Beam	2,50 m
Weight	1280 kg
Ballast/Swing keel	250 / 70 kg
Draft	0,29 / 1,3 m
Number of berths	4
Height in the cabin	1,72 m
Mainsail / Jib from	13 / 7,5 m ²
CE Category	C
Engine power	max 14,7 kW



◆ Tes 550 Master



[WATCH VIDEO ABOUT](#)

Master 550 is a sensational yacht for anyone who wants to have everything in a small space.

It is light, charming, and accessible. It can sail both individually and with up to 4 people. The yacht has been designed in such a way that the comfort of sailing with the company goes hand in hand with the possibility of independent operation. The sense of independence is complemented by the fact that the yacht can be transported even by a small car to any place desired by the helmsman. The foundation of the yacht is its speed and safety, and the intricate details of the finish add flavor.

Tes 550 Master, despite its small size, is a fully-fledged tourist yacht!

The most important features of the yacht:

- a small classic silhouette
- modern spacious interior for such a small yacht
- sailing agility
- safety
- excellent ergonomics
- sanitary cabin with toilet a mess room with a well-equipped galley
- full-size berths for 4 people
- comfortable and safe cockpit
- intended for inland waters and seas
- CE Category C

Swing keel



1-4 in owner version



4 in charter version

◆ Tes 678 Bt – Tes 720 Bt

It is a yacht with a length of just 6,78m or 7,20 with additional stern platform, despite its short length, it is surprisingly spacious and capacious. The interior has been perfectly designed, which makes it very ergonomic. The yacht has a classic silhouette for the Tes family and an interior full of warmth and charm. The galley is equipped with all the necessary elements and devices that should be on the yacht. There is also a separate toilet cabin in the yacht.

The interior is characterized by an open plan with berths located in the bow and stern of the unit. Perfect for a crew of 2-4 people. It is an excellent yacht for sailors who prefer smaller, more maneuverable vessels. It is a perfect unit for both charter companies and private shipowners.

The most important features of the yacht:

- ideal for transport - the hull width of 2.50 meters
- allows for easy transport
- classic hull line
- excellent nautical parameters
- excellent ergonomics
- open concept of interior development (possibility of separating a closed cabin bow)
- sanitary cabin with toilet and shower
- full-size berths for 4 people
- comfortable and safe cockpit
- great ventilation of the yacht
- safe, ergonomic cockpit
- CE category B or C

 **2-4** in owner version

 **4-6** in charter version

Swing keel



False keel

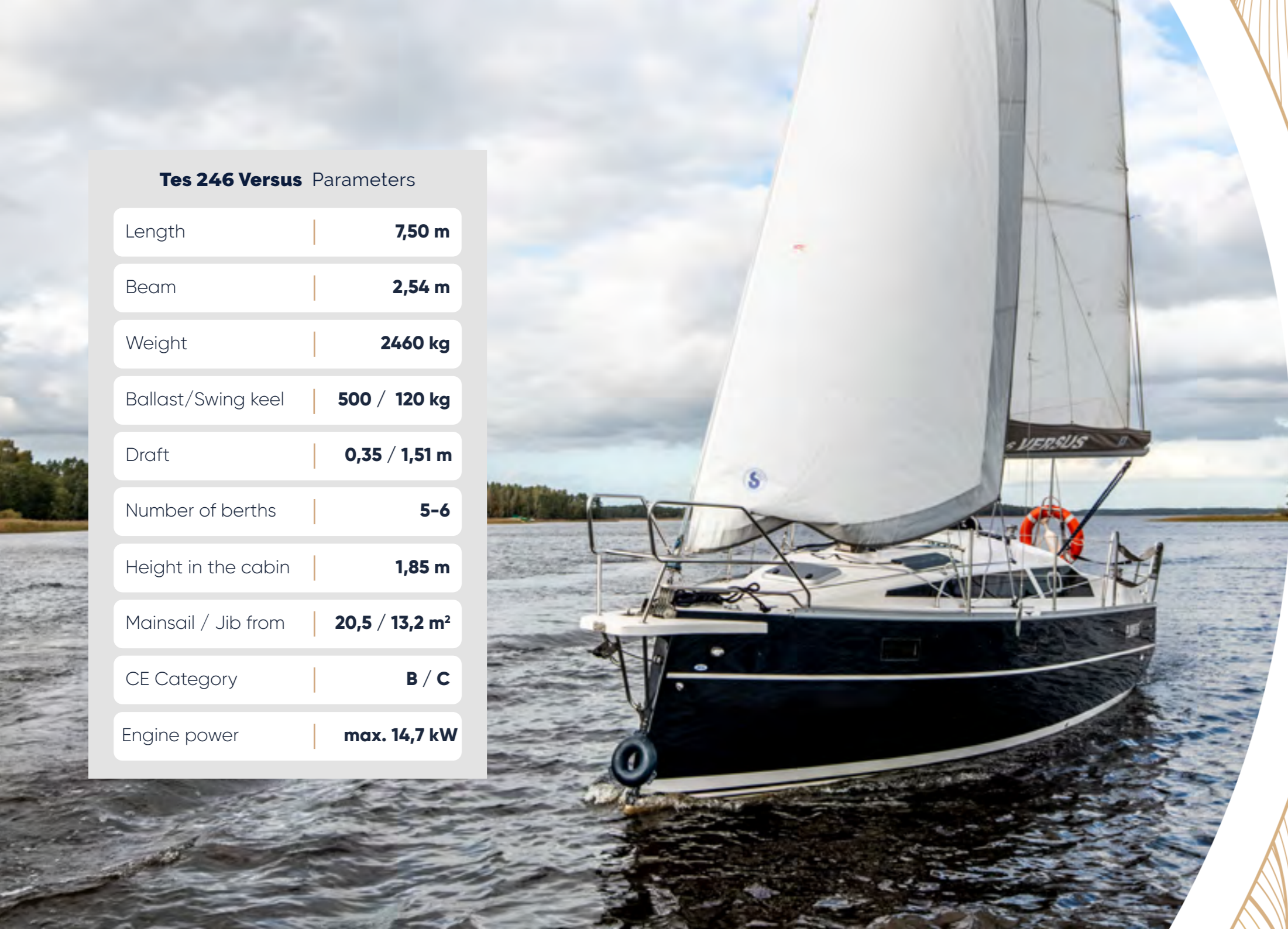


Fixed keel



Tes 678 Bt - Tes 720 Bt Parameters

Length	Tes 678 Bt	6,84 m
	Tes 720 Bt	7,20 m
Beam		2,53 m
Weight		1700 kg
Ballast/Swing keel		400/90 kg
Draft		0,3 / 1,4 m
Number of berths		4-6
Height in the cabin		1,72 m
Mainsail / Jib from		13,4 / 9,2 m²
CE Category		B/C
Engine power		max 14,7 kW



Tes 246 Versus Parameters

Length	7,50 m
Beam	2,54 m
Weight	2460 kg
Ballast/Swing keel	500 / 120 kg
Draft	0,35 / 1,51 m
Number of berths	5-6
Height in the cabin	1,85 m
Mainsail / Jib from	20,5 / 13,2 m²
CE Category	B / C
Engine power	max. 14,7 kW

◆ Tes 246 Versus



[WATCH VIDEO ABOUT](#)

“Better to belong to some than to all.” A. Sapkowski

Versus defies mediocrity – it is unique, original. Beautiful, eye-catching design goes hand in hand with excellent nautical parameters. Thanks to its construction and special emphasis on safety aspects, the yacht is the perfect sailing cruiser for the family. It is perfect for sailing on the lake and at sea, even in difficult weather conditions.

Thanks to the ergonomic solutions in the open-plan cabin design, it provides each cruise participant with space for themselves. We made sure that it was not only safe and dynamic, but also easy to drive.

Versus is a yacht that you will recognize from afar for its modern silhouette, with an inverted stem and a tasteful, slender shape.

The most important features of the yacht:

- Perfect for transport – the width of the hull of 2.49 meters allows it to be easily transported throughout Europe without special permits
- safe
- easy to sail even by one person
- excellent nautical parameters
- Inverted stem provides excellent stability
- excellent visibility from the cockpit
- spacious sanitary cabin with toilet and shower
- ergonomic kitchen
- luxurious finished spacious interior
- comfortable full-size berths
- excellent living conditions for the crew
- plenty of storage space
- CE category B or C

Swing keel



False keel



Fixed keel



2-4 in owner version



4-6 in charter version

◆ Tes 28 Magnam



[WATCH VIDEO ABOUT](#)

Go beyond the usual form, allow yourself extraordinary comfort.

Magnam means big, huge! Just as great is the comfort and fun of sailing this yacht, it gives a sense of solidity in workmanship and safety while traveling.

We know how and why, for many sailors who love wind and water, the comfort of sailing and life on a yacht is important. The point is to be able to focus on what is important to us, to get as much fun from sailing as possible! Therefore, we attach great importance to the possibility of enjoying peace during long and short journeys and the pleasure of using the tasteful, stylish interior of the yacht.

Thanks to its well-thought-out design, the Magnam can be easily guided on the water, and the stunning hull line delights even the most discerning sailors.

Swing keel



False keel



Fixed keel



The most important features of the yacht:

- classic hull line
- modern, tasteful, spacious interior
- the central part of the yacht is a large and comfortable mess with a well-equipped galley
- separate, closed fore and aft cabin
- large sanitary cabin with toilet and shower
- excellent living conditions for the crew
- design category B or C depending on the method of ballasting
- excellent yacht ventilation
- safe, ergonomic cockpit with high backrests, equipped with a closed aft platform that protects against accidental falling out and at the same time provides a perfect place for a bath
- easy access to all the on-board accessories necessary for sailing an organized galley and a mess room creating a space for feasting
- plenty of storage space
- the ease and pleasure of sailing



4-6 in charter version



2-4 in owner version

Tes 28 Magnam Parameters

Length | **8,18 m**

Beam | **2,98 m**

Weight | **+ 3500 kg**

Ballast/Swing keel | **880 / 120 kg**

Draft | **0,46 / 1,63 m**

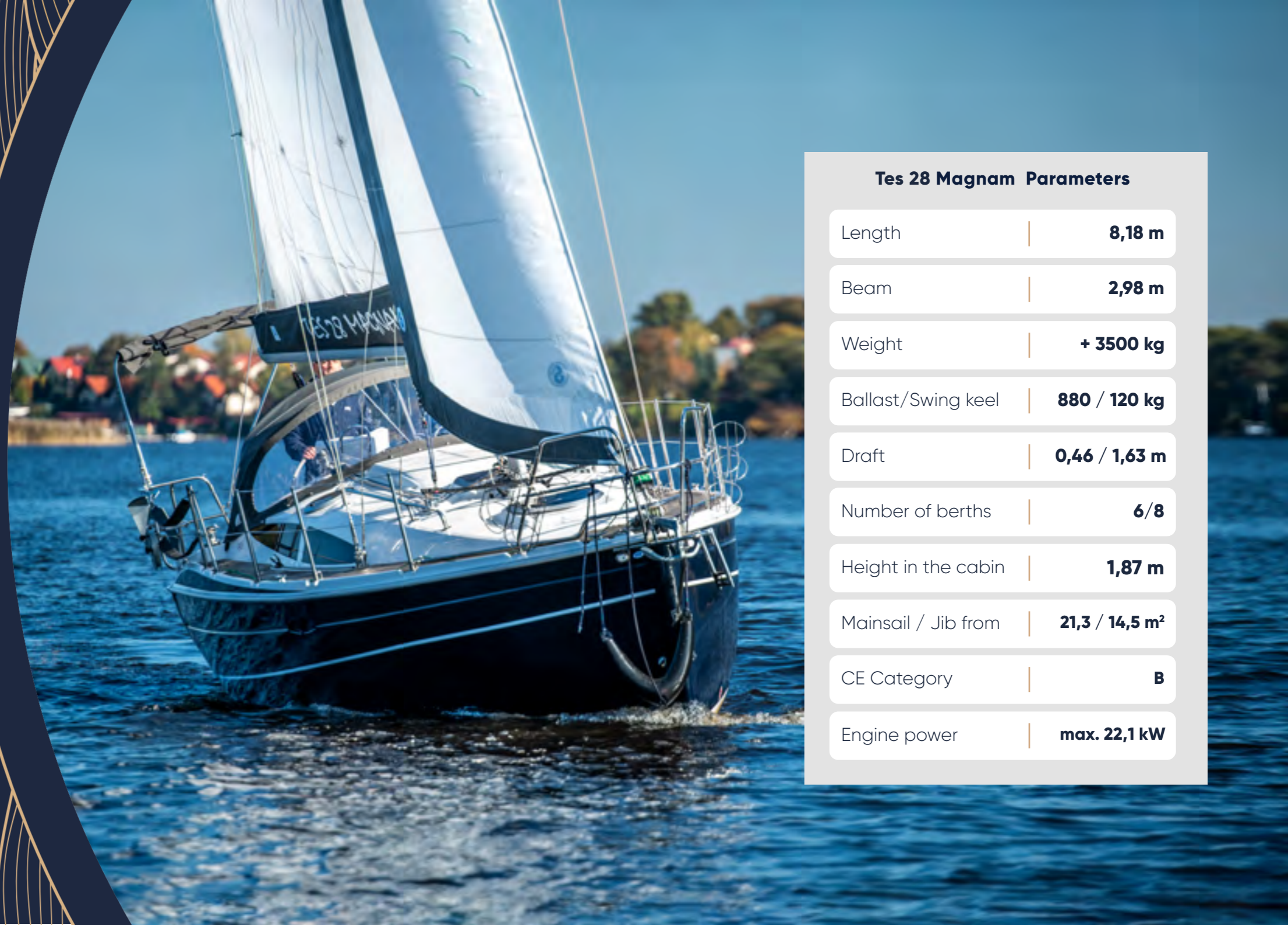
Number of berths | **6/8**

Height in the cabin | **1,87 m**

Mainsail / Jib from | **21,3 / 14,5 m²**

CE Category | **B**

Engine power | **max. 22,1 kW**



TES 550 Dreamer Parameters

Length	8,90 m
Beam	2,98 m
Weight	+ 4000 kg
Ballast/Swing keel	1000 / 120 kg
Draft	0,46 / 1,65 m
Number of berths	6/8
Height in the cabin	1,88 m
Mainsail / Jib from	22,4 / 14,5 m ²
CE Category	A / B
Engine power	max. 22,1 kW



◆ Tes 32 Dreamer

TES 32 Dreamer is a large, nearly 10-meter yacht, perfect for long voyages on inland and sea waters (design category A, B or C, depending on the ballasting method). It has a very spacious interior giving a sense of comfort and intimacy for a 6-8 person crew while maintaining the full standing height - 1.95 m. The yacht has one bow cabin and two stern cabins. In the central part of the yacht there is a spacious and comfortable mess with a separate ergonomic galley equipped with all necessary accessories. The unit also has a sanitary cabin with a toilet, shower and sink.

The Dreamer's cockpit offers a profiled, comfortable seat for the helmsman as well as comfortable places for the crew. It was designed with sailors in mind, which ensures its maximum ergonomics and ease of use. The unit is equipped with a long bowsprit gangway, thanks to which entering the port even through the bow is extremely easy and comfortable. It behaves perfectly both under sail and on the engine.

The most important features of the yacht:

- interesting, well-known hull line
- excellent nautical parameters sailing agility
- spacious interior with 3 separate cabins for the crew, one in bow part, two in the stern
- large sanitary cabin with toilet
- spacious and comfortable mess with a well-thought-out galley
- great ventilation of the yacht
- design category A, B or C (yacht can be prepared for sailing oceanic)
- safe, spacious, ergonomic cockpit with high backrests
- ease and pleasure of sailing

Swing keel



False keel



Fixed keel



6 in owner version



6-8 in charter version

◆ Quality & Comfort

We are designing Tes yachts with **customers comfort** and **convenience** in mind. That is why each of our units is already generously equipped in the standard version. We only use the **highest quality** materials.

The shipyard itself has been producing yachts in Drzewica continuously for **several decades**, and the company's headquarters is located in Gdynia – the sailing capital of Poland.

We take care of every detail of the boat, it's nautical parameters and tasteful finish. The decks of our units are finished with high-quality teak wood. The wood is processed in such a way as to make it resistant to the harmful effects of external factors, especially moisture and salt.

For development projects, we use unique construction ideas, based on ergonomics and a hedonistic desire to experience pleasure.

We constantly improve the **legendary** constructions and equip them with **the highest** quality yacht jewelry. We take care of every detail of the boat, its nautical parameters and tasteful finish.



◆ Possible hull and stripes colors

You have the option to personalize the hull and stripes color of your yacht by choosing from the entire RAL color palette. The RAL color system is a widely recognized color matching standard that includes a wide range of colors, allowing you to choose a shade that perfectly suits your preferences. From classic shades of white to bold and vibrant colors, the possibilities are endless.

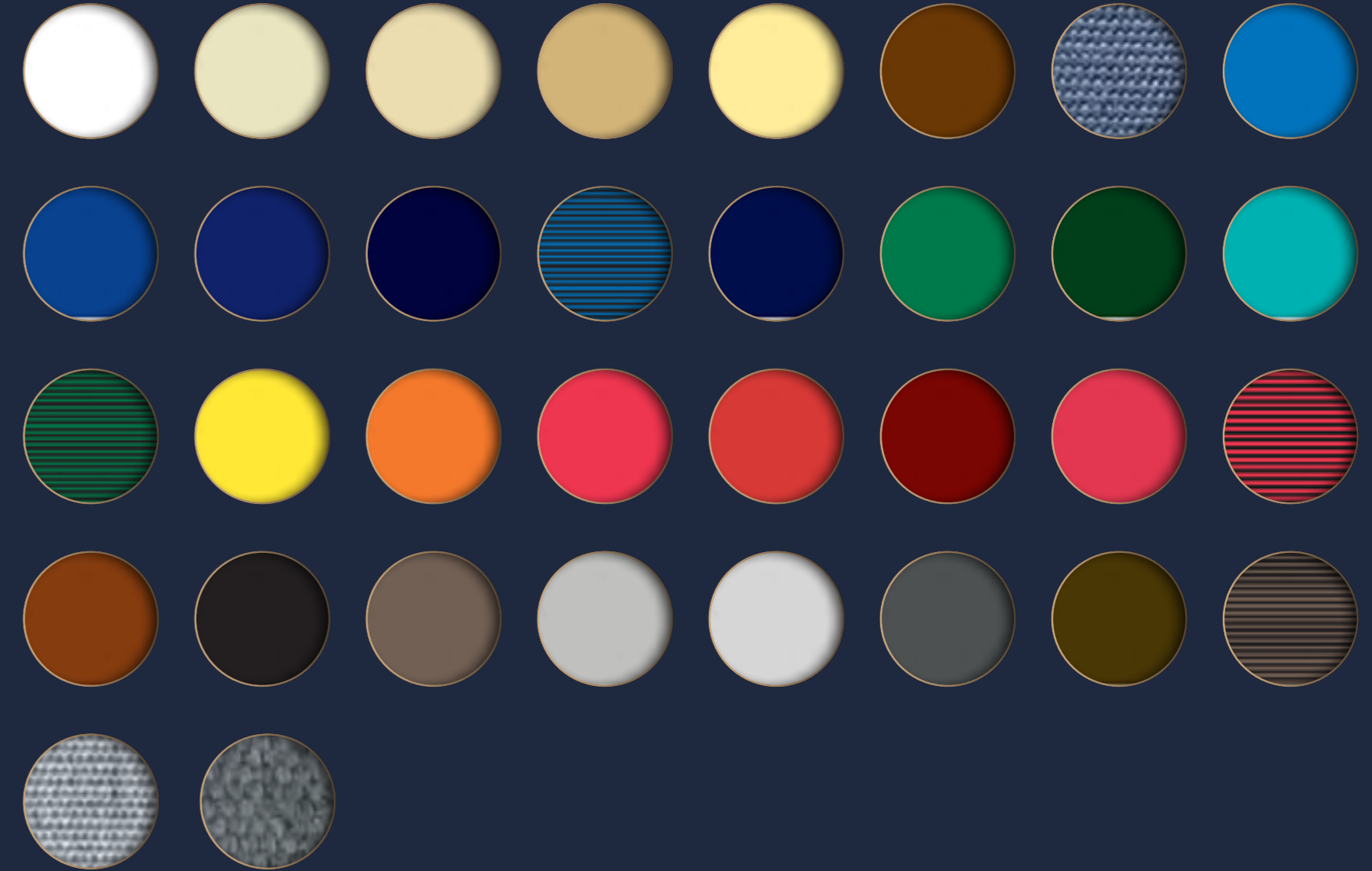
To choose your preferred color, simply provide the RAL color code to our team, and we will ensure that your yacht's hull is painted in the exact color you have chosen. Please note that the final appearance of the color may vary depending on the type of paint and finish used, as well as environmental factors such as lighting and weather conditions.

Choosing a unique hull color can make your yacht stand out and reflect your personal style, while also adding a touch of individuality to your vessel. If you have any questions about choosing a hull color or would like more information, our team is always available to assist you.



RAL palette

Sail material variations





◆ Custom made interior design

Choose a contemporary, custom made interior design that makes spending time on a yacht a truly enjoyable experience.

On our vessels, you can choose interior finishes to bring the comforts of home to your yacht.

The interiors in our yachts are handmade. The furniture showcases an exceptional finish and is made from the finest woods. They stand out with contemporary style and stand the test of time. You can choose the type and color of fabric to suit your needs and the mattresses are measured and fitted with the highest precision.

TES sailing yachts are famous for the quality of the materials. In each of our models, we have ensured that just the right amount of light enters the interior of the yacht.

Create **your** yacht to **your** liking.

Internal wood variations



Oak



American walnut



Mahogany



Ash



Dark stripe floor



Light stripe floor

Materials to choose



◆ Kitchen variations

Every type of kitchen can be equipped with plenty of options:

- ◆ Top loaded compressor fridge
- ◆ Front opened compressor fridge
- ◆ Cooker under glass flap
- ◆ Cooker on cardan joints
- ◆ Oven with cooker on cardan joints
- ◆ We can make additional drawers
- ◆ Outboard water instalation to the kichen

And many, many more...



Standard variant

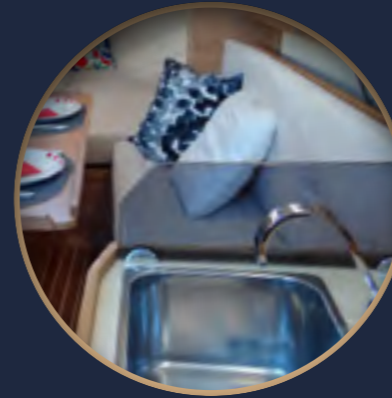


Medium variant

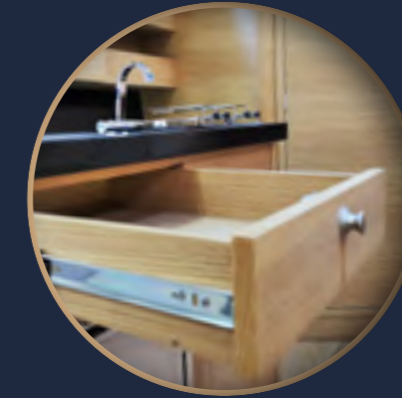


Large variant

◆ Kitchen additions



Plexi at a side of sink



Drawer for cuttlery



Cooker on cardan joints



Sink under the corian type countertop



Oven on cardan joints



Sample of cooker with glass flap

◆ Fridge variations

Depending on the type of kitchen furniture, we can install a front-loading fridge. If space permits, we can mount **40-60 liter** refrigerators. By default, the refrigerator is always powered by a **12V battery**.

We are also installing **ventilation grilles** on the countertop and under the fridge, and with the option of a large kitchen, we can install a mounting frame - the fridge is one line with the cabinets.



Dometic CRP40



Elegance
40l - 70l



Vitrifrigo c50i



◆ Electric dashboard panels

Depending on the number of electrical devices and indicators, we can use different layouts of buttons and indicators. The pictures above are just an example. The standard equipment includes a BEP panel with 6 buttons + WEMA indicators and sensors



Standard BEP panels with WEMA gauges.



BEP board on engraved PLEXI (With unit name + holes for indicators)



Amperflex Premium glass dashboard with micro monitor display



Amperflex Premium glass dashboard with micromonitor display, hydromagnetic fuses and boat engraving.

◆ Audio

The audio system we offer may consist of a radio, two speakers in the mess room and/or two speakers in the cockpit. On request, we can expand the audio system with an additional subwoofer or speakers in the bow, in the stern berth or in the bathroom. With the radio, we are mounting an internal FM antenna, or a mast antenna on request. All radios we offer support MP3 format and wireless Bluetooth communication.



Kenwood
MP3 / bluetooth radio



Clarion Marine
CMS4 radio



Fusion Marine
bluetooth radio



Pioneer
MP3 / bluetooth radio
with touch screen

◆ Contact



+48 534 260 450



biuro@tes-yacht.pl



www.tes-yacht.pl



TES YACHT



TES.YACHT



TES YACHT

